

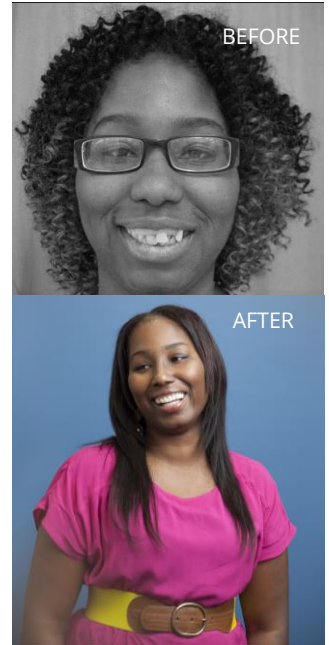


Interfaith Education Center for Community Dental Care: Dental Assistant Training Program

TOGETHER WE CAN GIVE OUR COMMUNITY SOMETHING TO SMILE ABOUT

BUILDING CAREERS WHILE BRINGING SMILES TO OTHERS!

Through the Interfaith Education Center for Community Dental Care (housed within its existing clinics), Interfaith Dental Clinic will dramatically increase its impact on reducing oral disease. Trainees develop their skills while providing quality care to those in our community who are least able to afford it. With extra focus on cultural competency and whole-person, patient-centered care, dental professionals trained at Interfaith will be able to excel in meeting the oral health challenges of our times.



IFDC Patient Graduate:
Lamyai

Interfaith Education Center for Community Dental Care

210 Robert Rose Drive
Suite 2

Murfreesboro, TN 37129

P: (615) 225-5051

F: (615) 921-5168

Educate@interfaithdentalclinic.com

Text "RDA1" to 51555

Interfaith Education Center for Community Dental Care's mission is through hands-on training, to give dental professionals the opportunity to develop their skills while providing quality care to those in our community who are least able to afford it.

interfaithdentalclinic.com/education-center/



For more information:

Andrea Stilwell, Chief Officer of Education

615-921-5168

andrea@interfaithdentalclinic.com

Lindsay Baker, RDA Instructor

615-225-5051

lindsay@interfaithdentalclinic.com

**Interfaith Dental Clinic
of Greater Nashville**

1721 Patterson Street

Nashville, TN 37203

P: (615) 329-4790

F: (615) 320-0613

**Interfaith Dental Clinic
of Rutherford County**

210 Robert Rose Drive

Murfreesboro, TN 37129

P: (615) 225-4141

F: (615) 225-4151

Become a Dental Assistant!

Registered Dental Assistants (RDAs) are two parts scrub nurse, one part caregiver, and one part care coordinator - so much more than sucking spit! Most of dentistry is four handed for efficiency and to achieve superior quality, so you are an indispensable part of the team. RDAs can also polish teeth, apply fluoride, place sealants, and teach oral hygiene.

According to the Bureau of Labor Statistics, demand for this profession is on the rise. Employment of dental assistants is projected to grow 25% from 2012-2022. Become a part of this exciting profession!

Interfaith's classroom/didactic and clinical training program creates a well-prepared and highly sought-after RDA professional with excellent clinical skills, compassion, and a patient-centered approach. Students will benefit from comprehensive preparation working in general dentistry, as well as experience in endodontics, IV sedation, and oral surgery. RDA students will have the opportunity to be involved with caring for patients ranging from children to seniors.

This board-approved **eight-month** full-time training program enrolls students three times annually. Classes are limited to six participants to ensure a low student-to-instructor ratio and to provide optimal **clinical experience** serving patients in both Interfaith Dental Clinic locations - Murfreesboro and Nashville (ALL didactic/ classroom instruction is in Murfreesboro).

WHAT CAN I EXPECT FROM THE PROGRAM?

Students will have hands-on, live patient experience throughout their time of study - starting the **first week** in the board-approved eight-month program. The 960 total hours of instruction are divided into two phases:

- **Phase I** runs for 16 weeks and includes up to 4 days a week (7 hours/day) of didactic/ classroom instruction. At least one day/week (4-7 hours) is dedicated to clinical rotations in chairside patient care, dental hygiene, and reception/front desk.
- **Phase II** follows for an additional 16 weeks and includes 4 days/week of clinical rotations (7 hours/day with potential for evening hours) in sterilization, chairside patient care (restorative **AND** oral surgery), dental hygiene and behavioral counseling, and reception/front desk. Friday mornings are dedicated to classroom review.

WHAT IS INTERFAITH DENTAL CLINIC?

IFDC is a dental charity with sites in Nashville and Murfreesboro. Alongside staff, more than 300 clinical & community volunteers provide oral health care to approximately 2,700 patients annually. IFDC provides comprehensive and emergency dental services for individuals suffering from devastating dental disease. Patients served by Interfaith are uninsured and low-income, thus pay on a sliding fee scale. Patients come from ten Middle Tennessee counties.

IMPORTANT DATES AND COSTS

2018 Application Deadline Timeframes

Summer Class/Cohort 2018:

- May 14, 2018
(enrollment period ends 5/29/18)

Fall Class/Cohort 2018:

- September 10, 2018
(enrollment period ends 9/24/18)

2018 Class/Cohort Start Dates

Summer Class/Cohort 2018:

- June 11, 2018
(anticipated end date in Feb.2019)

Fall Class/Cohort 2018:

- October 8, 2018
(anticipated end date in June 2019)

Tuition: \$15,000

Information on **scholarships** and student tuition loans is available!

Tuition **INCLUDES** courses in the expanded functions of nitrous oxide monitoring, sealant application, and coronal polishing.*

**Coronal polishing course is completed upon graduation and licensure by the state.*

